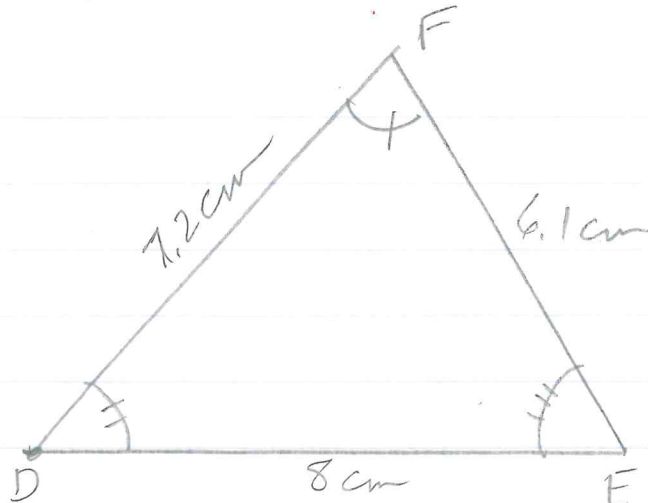


Notes 7.2 - Δ Similarity Shortcuts

FIVE STAR.



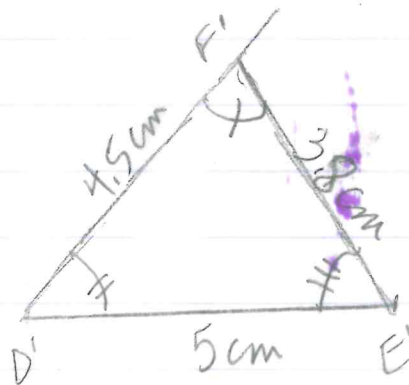
$$\angle D \cong \angle D'$$

$$\angle E \cong \angle E'$$

Corresp \angle 's are \cong

$$\triangle DEF \cong \triangle D'E'F'$$

FIVE STAR.



$$\frac{DE}{D'E'} = \frac{8}{5} \quad \frac{DF}{D'F'} = \frac{7.2}{4.5}$$

$$\frac{EF}{E'F'} = \frac{6.1}{3.8}$$

Sides have the same ratio

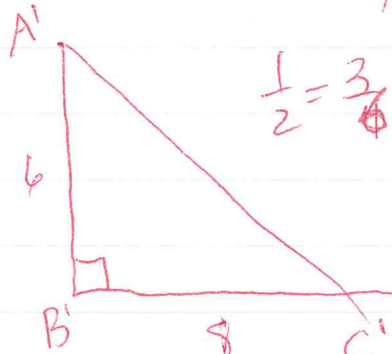
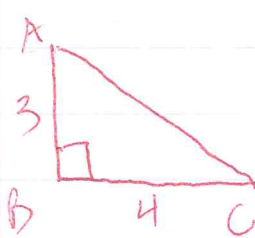
Corresp sides are proportional

FIVE STAR.

$$\triangle DEF \cong \triangle D'E'F'$$

AA is a Similarity shortcut

FIVE STAR.



$$\frac{1}{2} = \frac{3}{6} = \frac{4}{8} \quad \angle B \cong \angle B'$$

but $AC = 5$ & $A'C' = 10$ $\frac{5}{10} = \frac{1}{2}$

$$\angle A \cong \angle A' \quad \angle C \cong \angle C'$$

SO SAS is a shortcut

SSS (all pairs of sides proportional) ALSO WORKS