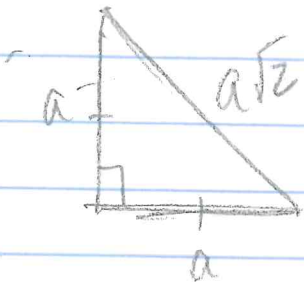
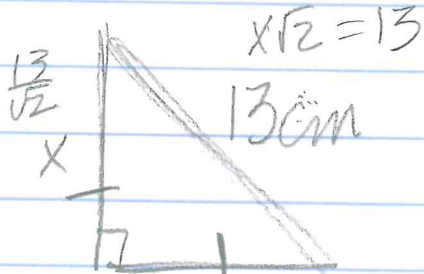


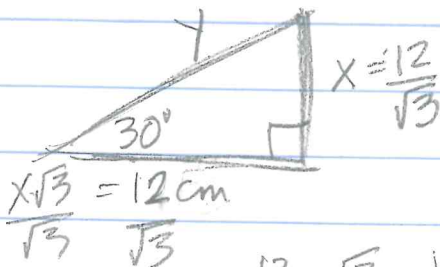
# Rationalize denominator.



$$\frac{1}{\sqrt{2}} \cdot \frac{\sqrt{2}}{\sqrt{2}} = \frac{\sqrt{2}}{2}$$



$$y \frac{13}{\sqrt{2}} \cdot \frac{\sqrt{2}}{\sqrt{2}} = \frac{13\sqrt{2}}{2}$$



$$\frac{x\sqrt{3}}{\sqrt{3}} = 12 \text{ cm}$$

$$\frac{12 \cdot \sqrt{3}}{\sqrt{3} \cdot \sqrt{3}} = \frac{12\sqrt{3}}{3}$$

$$4\sqrt{3}$$

