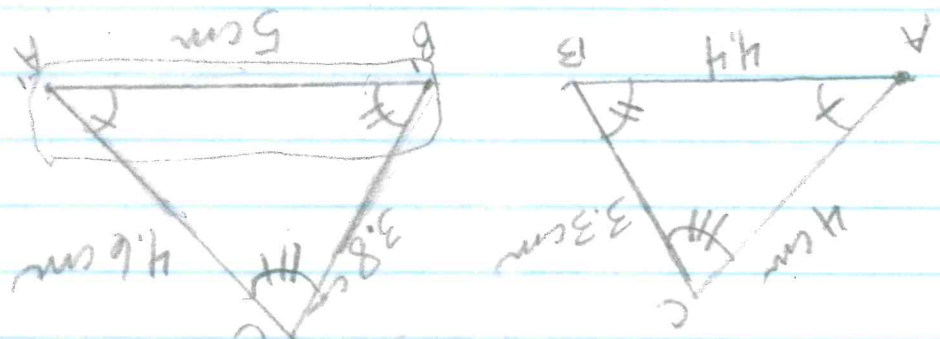
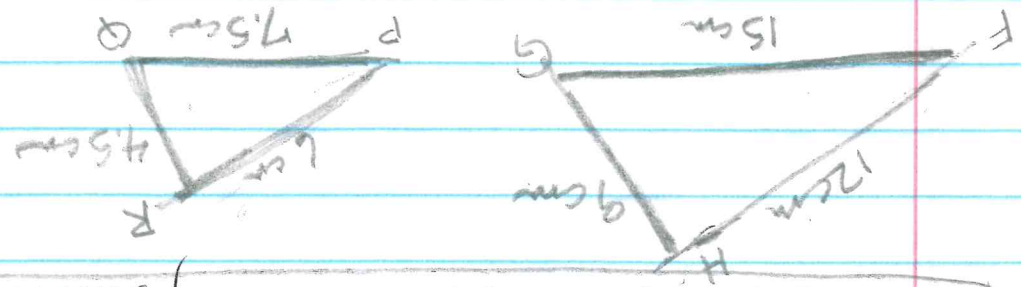


Notes/Investigation 7.2 - Triangle Similarity



Given: $\angle A \cong \angle A'$
 $\angle B \cong \angle B'$
 $\triangle ABC \cong \triangle A'B'C'$
 $\frac{4.4}{5} = \frac{3.3}{4.6} = \frac{3.8}{4.6}$
 $88 \approx 87 \approx 87$

If two triangles have two pairs of corresponding congruent angles, then they are similar. AA Similarity Shortcut



Given: 2 triangles with proportional sides
 Dissem: $\angle F = \angle P$, $\angle G = \angle Q$, $\angle H = \angle R$
 If two triangles have corresponding proportional sides, then they are similar. SSS Triangle Similarity Shortcut