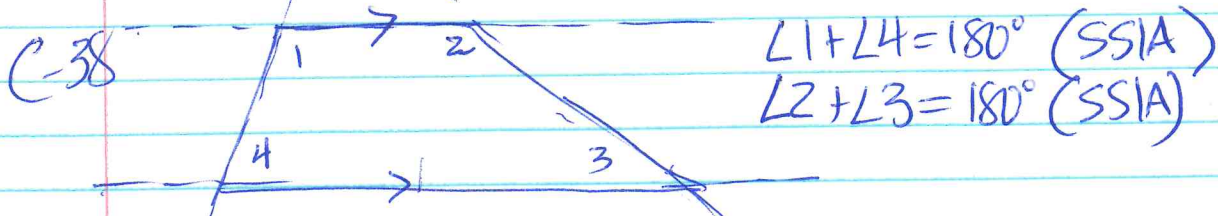
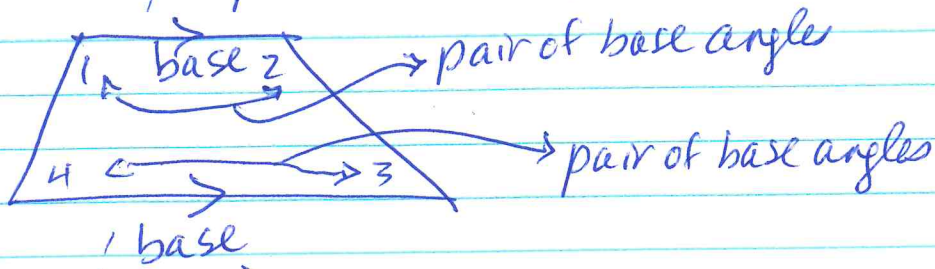
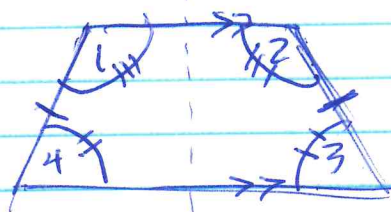


In-class section

5.3 - trapezoid notes

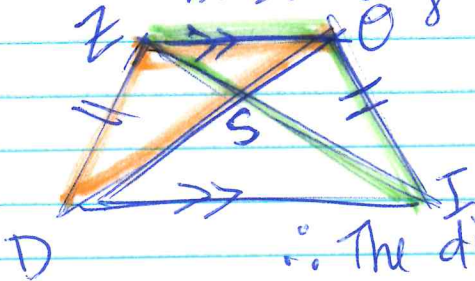


\therefore The consecutive angles between bases of a trapezoid are supplementary.



isosceles trapezoid
a trapezoid that has the non-parallel sides congruent.

In an isosceles trapezoid, pairs of base angles are congruent.

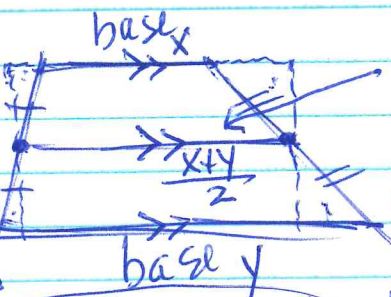


$$\triangle DZO \cong \triangle IOZ - SAS$$

$$\overline{DO} \cong \overline{IZ} - \text{corresp parts}$$

\therefore The diagonals of an isosceles trapezoid are congruent.

old textbook
p 276: 6-7
p 269: 3, 4, 6
14, 17



midsegment - connects midpts of non-parallel sides
 \therefore The midsegment of a trapezoid is parallel to the bases and half the sum of the bases.

HW #13 p 271: 17 mini-proof, p 278-9: 3-4, 6-9, 20 p 307: 6-7