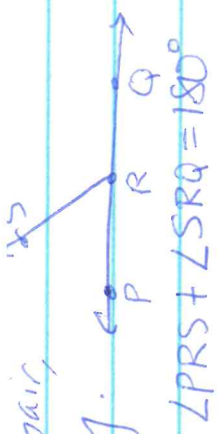
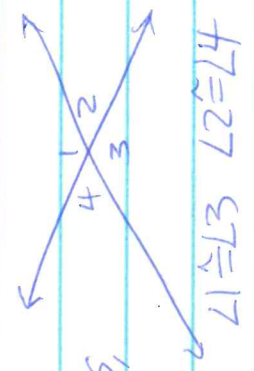


P.132 If two angles form a linear pair, then they are supplementary. (or they add up to 180°)



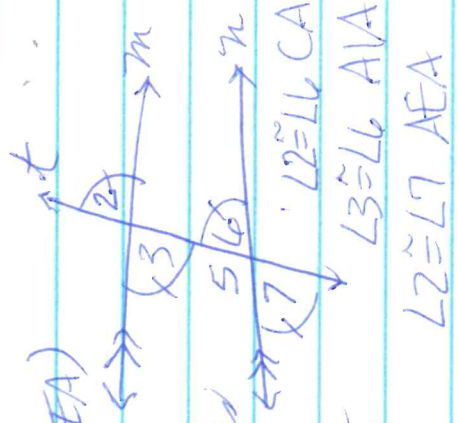
C-2 Vertical Angles Conj (VA)

If two angles are vertical angles, then they are congruent. (or have equal measures)



C-3 Parallel Lines Conj (CA, AIA, AEA)

P.139 If two parallel lines are cut by a transversal, then corresponding angles are congruent; alternate interior angles are congruent, and alternate exterior angles are congruent. Same-sided interior angles are supplementary.



C-4 Parallel lines Converse

If 2 lines cut by a transversal form pairs of congruent CA, AIA or AEA, then the two lines are parallel. The same is true for supplementary SSA. Ex) $L3 + L5 = 180^\circ$, $\therefore m \parallel n$

See sketch on #3

$L2 \neq L6$ are

corresponding angles

$L4$ are alternate interior angles

$L2 \neq L7$ are

alternate exterior angles

$L4 \neq L6$ are

same-sided interior angles

for consecutive interior $L5$