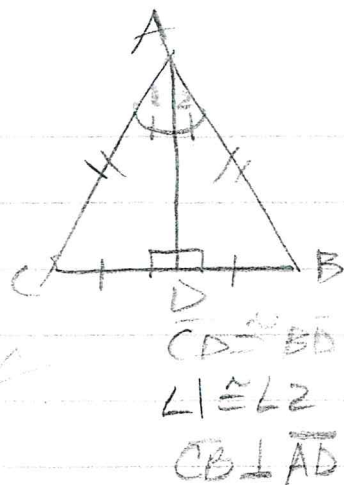


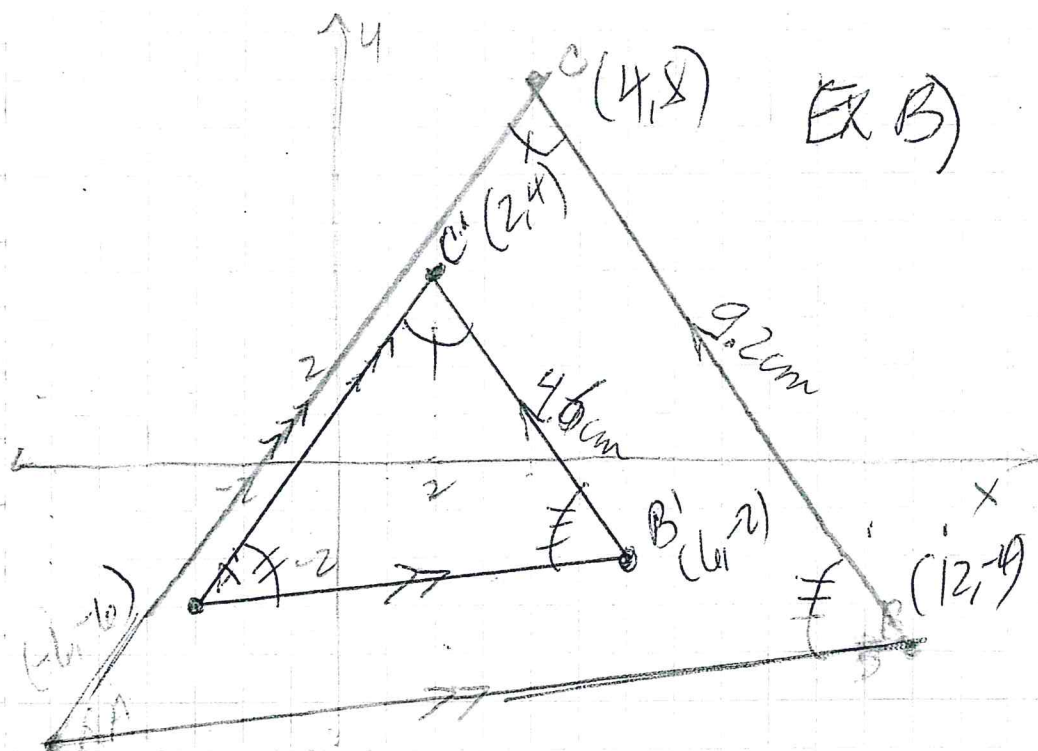
C-28. Vertex Angle Bisector Th
 In an isosceles Δ , the bisector
 of the vertex angle is also
 an altitude, a median, and
 a perpendicular bisector of
 the base



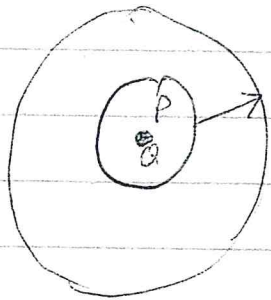
(p 371)

Dilation Chapter 7 - Dilation/Similarity
 a non-rigid transformation that enlarges
 or reduces a geometric figure by a scale factor
 relative to a point.

On the grid: $(x, y) \rightarrow (rx, ry)$
 $r < 1$ constrict $r < 1$ reduce $r > 1$ enlarge

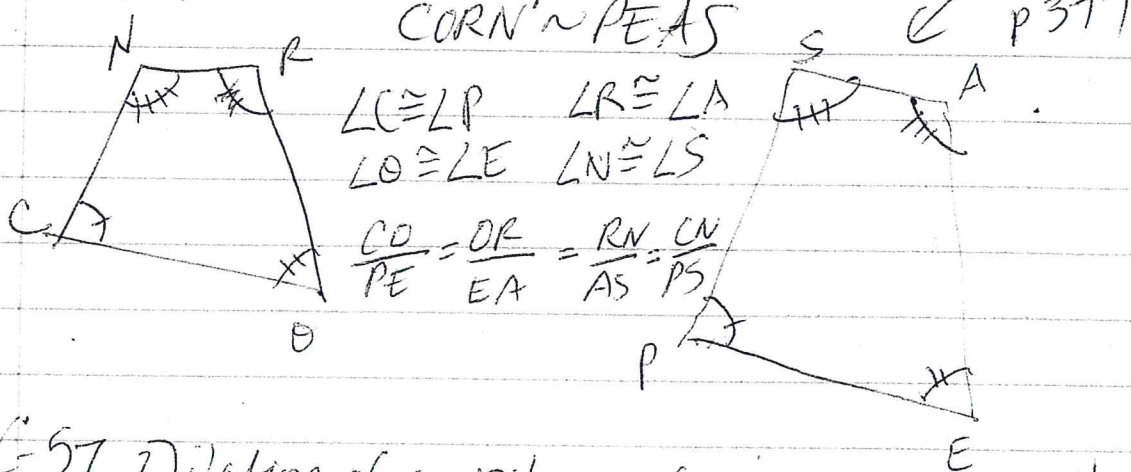


C p372 - Dilation of Circles + C-58
 All circles are dilations of each other.
 (are similar)



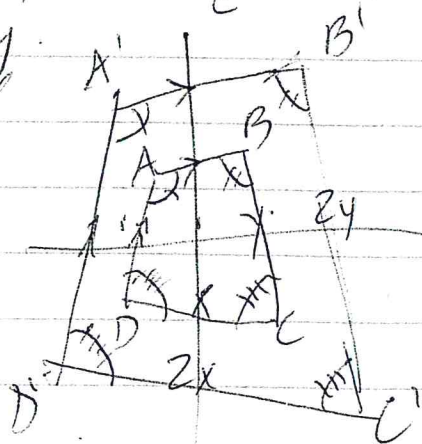
p 374 - Similar polygons
 polygons with
 Congruent corresponding angles
 and proportional corresponding sides.

(see sketch on
~~dilation on~~
 previous page)



C-57 Dilation of a polygon
 p375 If one polygon is the dilated
 image of another, then the polygons
 are similar.

Ex) $(x, y) \rightarrow (2x, 2y)$
 dilate w/ scale factor
 of 2.



Similar figures

Two geometric figures are similar if you can map one exactly onto another by a sequence of rigid transformations and/or dilations.

ratio - an expression that compares 2 quantities by division $\frac{a}{b}$ a to b a:b

proportion - a statement of equality between two ratios EX) $\frac{6}{18} = \frac{1}{3}$