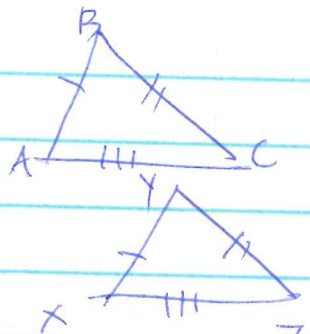


C-24 Side Side Side Cong.

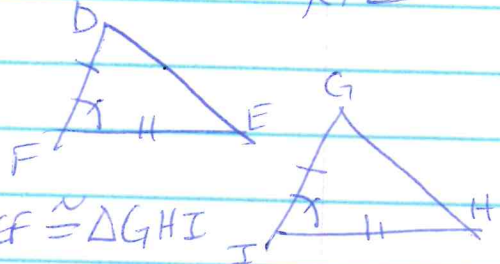
If corresponding sides of two triangles are congruent, then the triangles are congruent.



$$\triangle ABC \cong \triangle XYZ$$

C-25 Side Angle Side Cong.

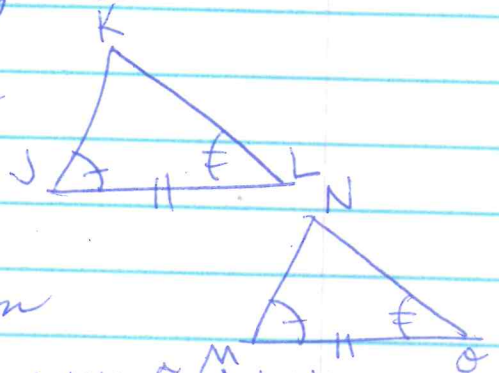
If two ~~corresponding~~ pairs of corresponding sides ^{of two triangles} and the included angle between them are congruent, then the two triangles are congruent.



$$\triangle DEF \cong \triangle GHI$$

C-26 Angle Side Angle Cong.

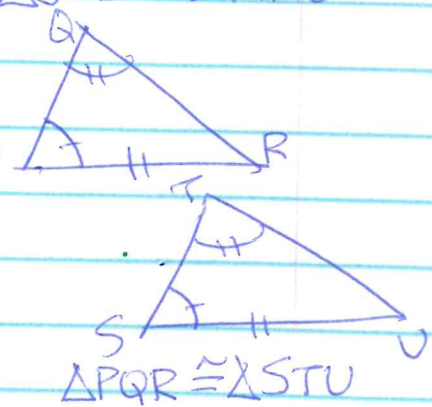
If two corresponding pairs of angles in two triangles are congruent, and the side between them is congruent, then the triangles are congruent.



$$\triangle JKL \cong \triangle MNO$$

C-27 Side Angle Angle Cong.

If two corresponding pairs of angles in two triangles are congruent, and a side not between the two angles is congruent, then the triangles are congruent.



$$\triangle PQR \cong \triangle STU$$