

Similar figures

Two geometric figures are similar if you can map one exactly onto another by a sequence of rigid transformations and/or dilations.

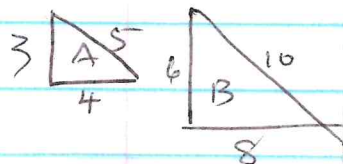
ratio - an expression that compares 2 quantities by division. $\frac{a}{b}$ $a \div b$ $a:b$

proportion - a statement of equality between two ratios. EX) $\frac{6}{18} = \frac{1}{3}$

Triangle Similarity Shortcuts

C-59 SSS Similarity Shortcut

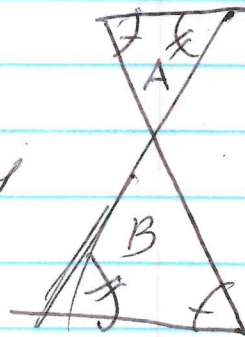
If the corresponding sides of one triangle are proportional to the corresponding sides of another Δ , then the Δ 's are similar.



$B \sim A$

C-60 AA Similarity Shortcut

If two angles of one Δ are congruent to two corresponding angles of another Δ , then the Δ 's are similar.



$A \sim B$