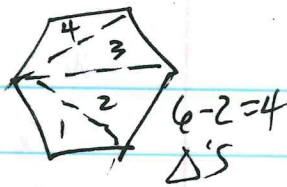


p257
C-32

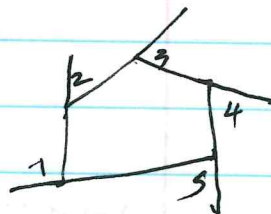
Polygon Sum Conjecture

The sum of the measures of the n interior angles of an n -gon is $180(n-2)$



p261
C-33

Exterior Angle Sum Conj
for any polygon, the sum of the measures of a set of exterior angles is 360° .



$$\angle 1 + \angle 2 + \angle 3 + \angle 4 + \angle 5 = 180^\circ$$

~~180°~~
 360°

p 261
C-34

Equiangular Polygon Conj -
You can find the measure of each interior angle of an equiangular n -gon by using either formula:

no sketch

$$\frac{180(n-2)}{n} \text{ or } 180 - \frac{360}{n}$$

(linear pair to
on exterior)