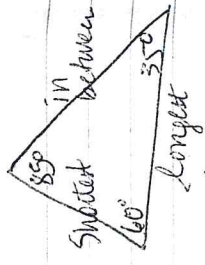
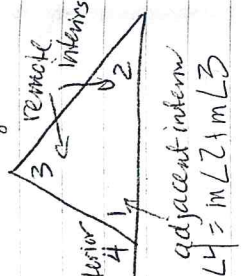


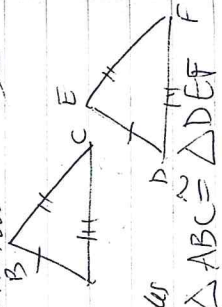
C-22 Side-Angle Inequality Cong  
 P. 215 In a triangle, the longest side is opposite the largest angle.



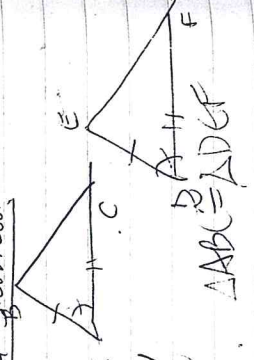
C-23 Triangle Exterior Angle Theorem  
 The measure of an exterior angle of a triangle is equal to the sum of the measures of its two remote interior angles.



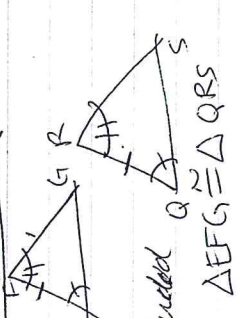
C-24 Side, Side, Side  $\cong$  Shortcut SSS  
 P. — If all the corresponding sides of two triangles are congruent, then the triangles are congruent.



C-25 SAS Triangle Congruence Shortcut  
 P. — If two pairs of adjacent corresponding sides and their included angle are congruent in two triangles, then the triangles are congruent.



C-26 ASA Triangle Congruence Shortcut  
 P. 225 If two angles and the included side of one triangle are congruent to two angles and the included side of another triangle, then the triangles are congruent.



C-27 SAA Triangle Congruence Shortcut  
 P. — If two angles and a non-included side of one triangle are congruent to two angles and the non-included side of another triangle, then the triangles are congruent.

