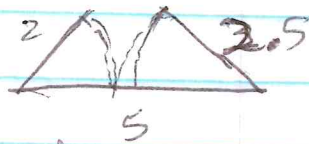
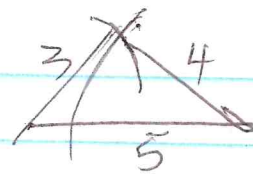


C-20 Triangle Inequality Conj.

p221 The sum of the lengths of any two sides of a triangle is greater than the length of the third side.

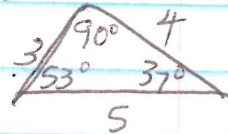
(Hint: always test 2 shortest sides)



C-22 Side-Angle Inequality Conj

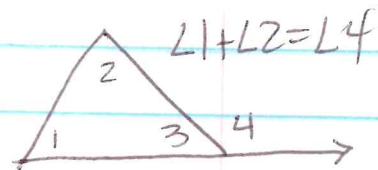
p222 In a triangle, if one side is longer than another, then the angle opposite the longer side is larger.

If scalene: longest opposite largest
shortest opposite smallest



C-23 Triangle Exterior Angle Theorem

p222 The measure of an exterior angle of a triangle is equal to the sum of the measures of its remote interior angles.



L4 is exterior
L3 is adjacent interior
L1 & L2 are remote interior

C-20
p 212