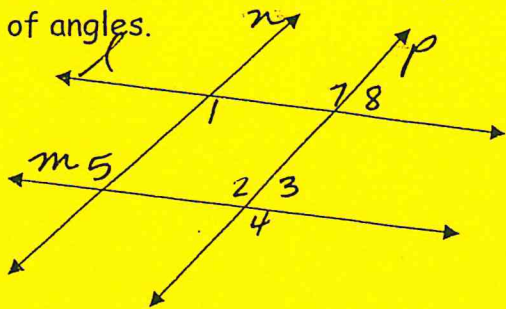


Geometry Warm-up 2.6

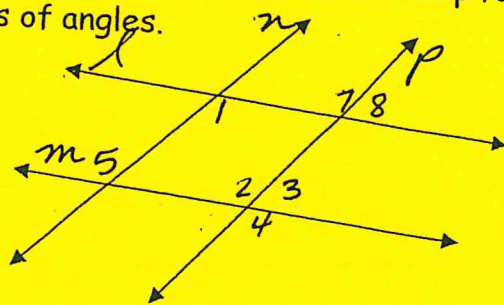
Give the name for each relationship for the pairs of angles.



- 1) $\angle 1$ and $\angle 7$
- 2) $\angle 3$ and $\angle 8$
- 3) $\angle 7$ and $\angle 8$
- 4) $\angle 5$ and $\angle 4$
- 5) $\angle 4$ and $\angle 2$
- 6) $\angle 5 \cong \angle 2$ Which two lines are parallel?
- 7) $\angle 4$ is not $\cong \angle 7$ Which lines are not parallel?

Geometry Warm-up 2.6

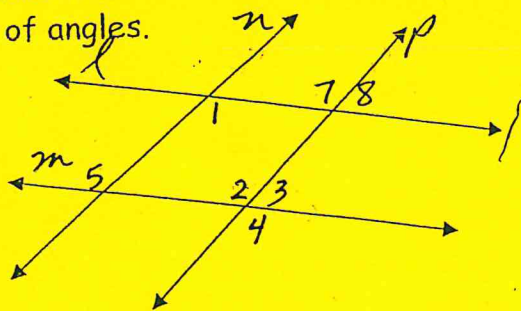
Give the name for each relationship for the pairs of angles.



- 1) $\angle 1$ and $\angle 7$
- 2) $\angle 3$ and $\angle 8$
- 3) $\angle 7$ and $\angle 8$
- 4) $\angle 5$ and $\angle 4$
- 5) $\angle 4$ and $\angle 2$
- 6) $\angle 5 \cong \angle 2$ Which two lines are parallel?
- 7) $\angle 4$ is not $\cong \angle 7$ Which lines are not parallel?

Geometry Warm-up 2.6

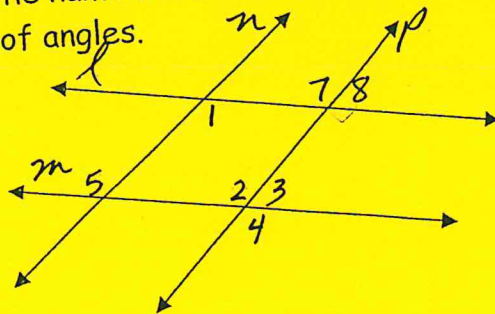
Give the name for each relationship for the pairs of angles.



- 1) $\angle 1$ and $\angle 7$
- 2) $\angle 3$ and $\angle 8$
- 3) $\angle 7$ and $\angle 8$
- 4) $\angle 5$ and $\angle 4$
- 5) $\angle 4$ and $\angle 2$
- 6) $\angle 5 \cong \angle 2$ Which two lines are parallel?
- 7) $\angle 4$ is not $\cong \angle 7$ Which lines are not parallel?

Geometry Warm-up 2.6

Give the name for each relationship for the pairs of angles.



- 1) $\angle 1$ and $\angle 7$
- 2) $\angle 3$ and $\angle 8$
- 3) $\angle 7$ and $\angle 8$
- 4) $\angle 5$ and $\angle 4$
- 5) $\angle 4$ and $\angle 2$
- 6) $\angle 5 \cong \angle 2$ Which two lines are parallel?
- 7) $\angle 4$ is not $\cong \angle 7$ Which lines are not parallel?