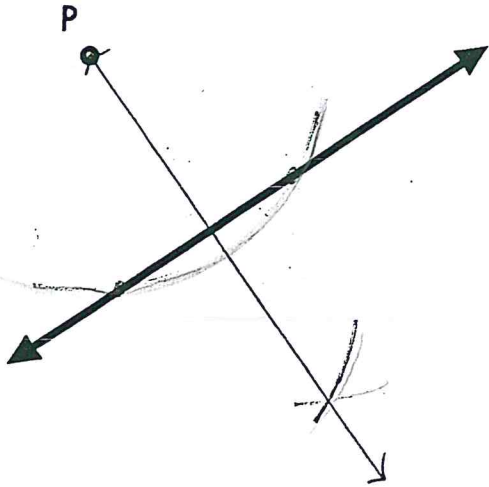


Key

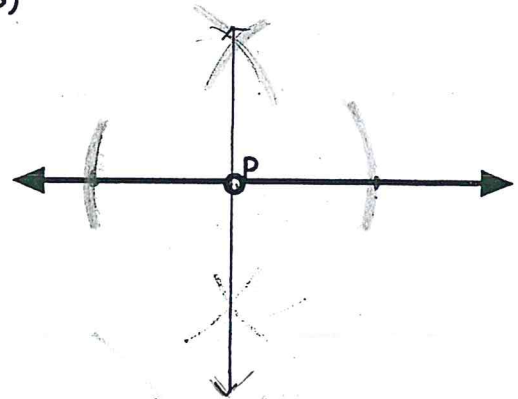
Geometry Worksheet
Constructions 3.1-3.4

1. Construct the perpendicular through point P to the line.

A)



B)



2. Construct $\frac{1}{4} AB$

3. Construct $JO = 3CD - \frac{1}{2} AB$

4. Construct a right isosceles triangle with the two legs equal to CD.

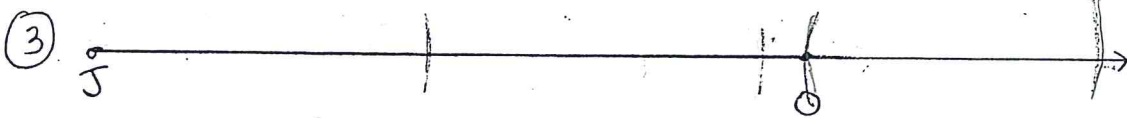
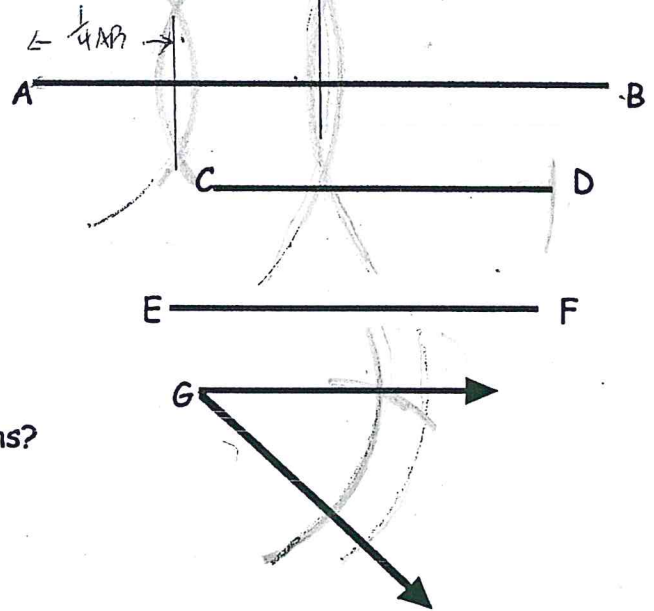
5. Construct an obtuse triangle XYZ with $m\angle X = m\angle G$ and $XZ = CD$. Can you construct a different triangle with the same stipulations?

yes.

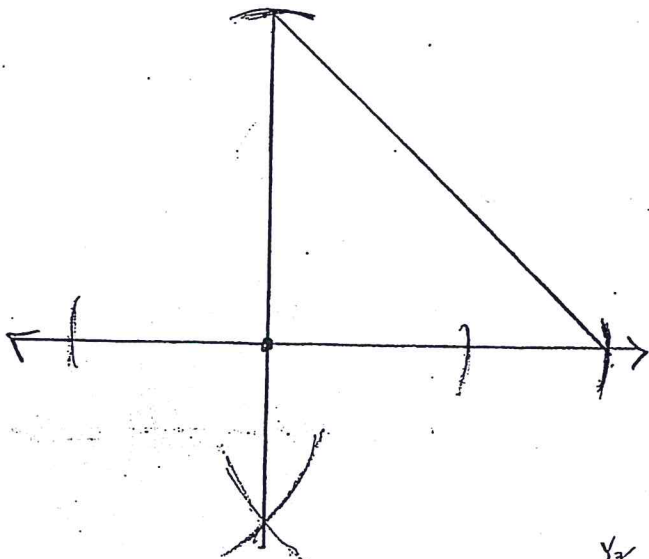
6. Construct triangle OPQ with $OP = AB$, $PQ = CD$, and $OQ = EF$.

7. Construct triangle LMN with $MN = CD$, $LN = EF$, and $m\angle N = m\angle G$. Can you construct a different triangle with the same stipulations?

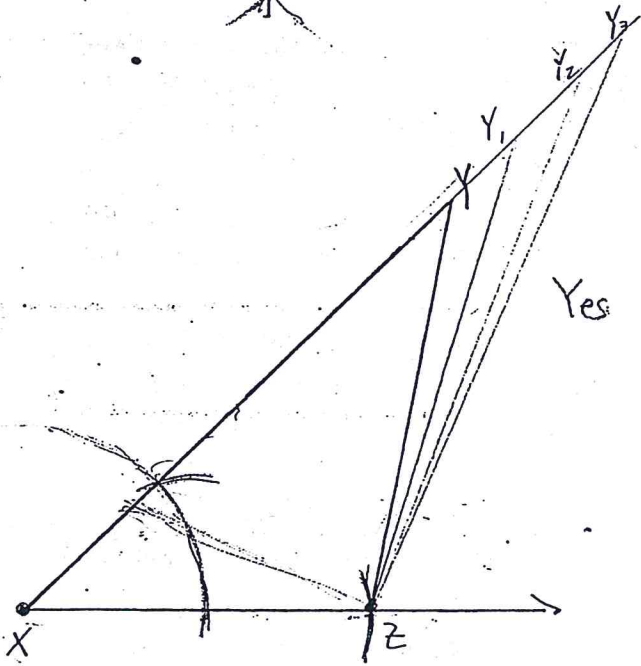
No



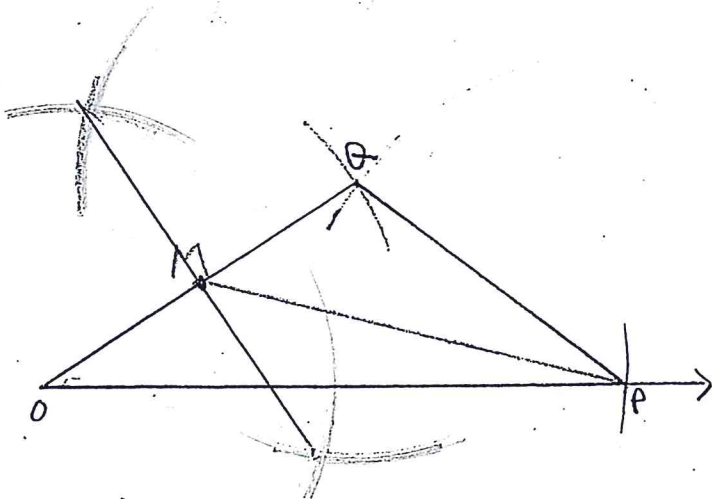
4



5



6



7

No

