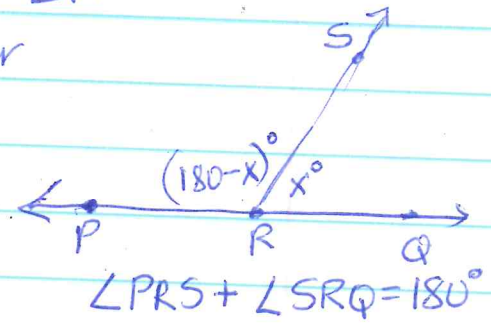


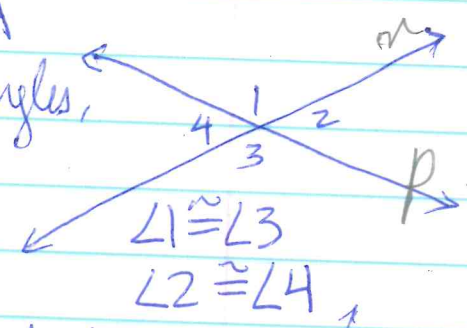
C-1 Linear Pair Conj. LP.

p 120 If two angles form a linear pair, then they are supplementary.



C-2 Vertical Angles Conj. VA

p 121 If two angles are vertical angles, then they are congruent.



C-3 Parallel Lines Conj. CA, AIA, AEA

p 127 If two parallel lines are cut by a transversal, then corresponding angles are \cong , alternate interior angles are \cong , and alternate exterior angles are \cong .

