

Section 4.7

Precalculus

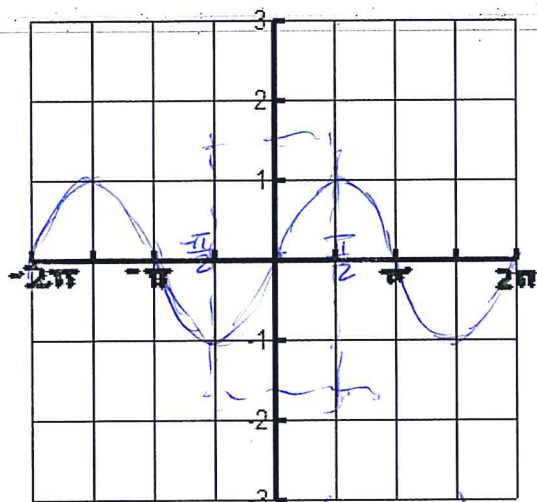
Name U Bogun  
 Period \_\_\_\_\_

Graphing inverse trig functions

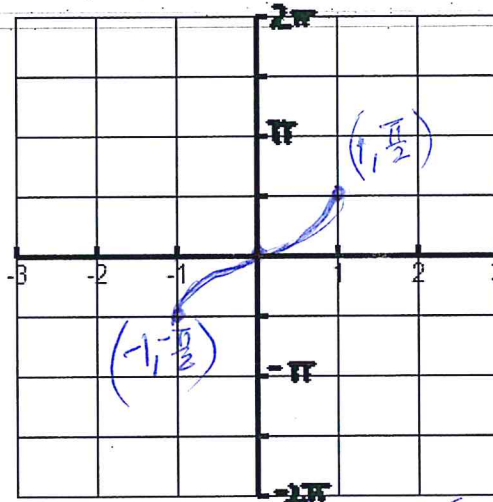
Graph the trig functions on the left graph then graph the inverse trig functions on the right graph.

1.  $y = \sin x$

$y = \sin^{-1} x$



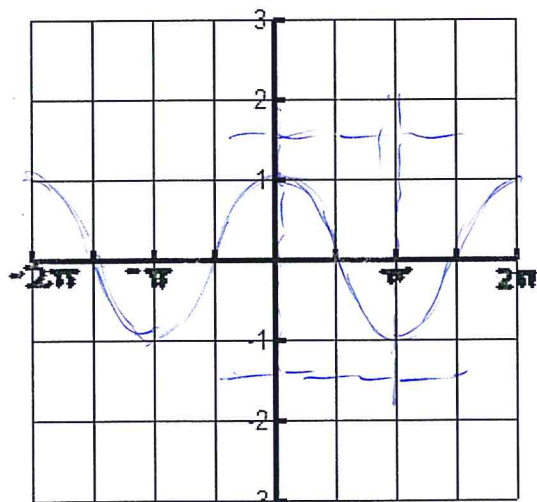
domain  $(-\infty, \infty)$   
 range  $[-1, 1]$



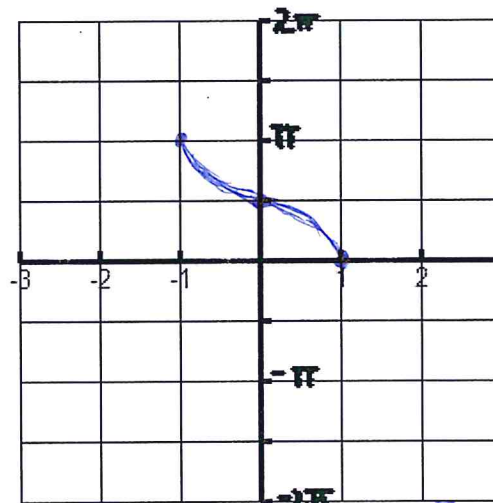
domain  $[-1, 1]$   
 range  $[-\frac{\pi}{2}, \frac{\pi}{2}]$

2.  $y = \cos x$

$y = \cos^{-1} x$

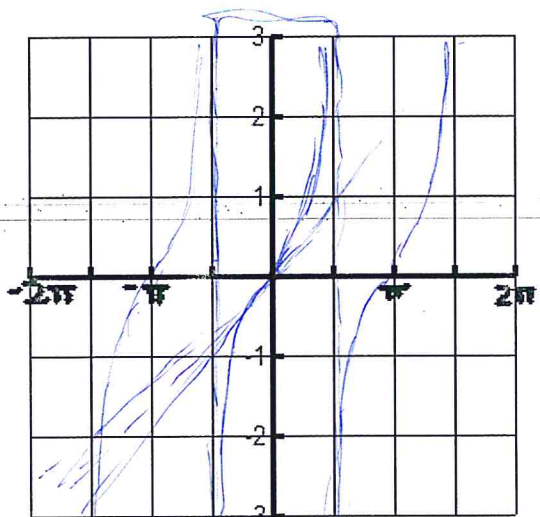


domain  $(-\infty, \infty)$   
 range  $[-1, 1]$



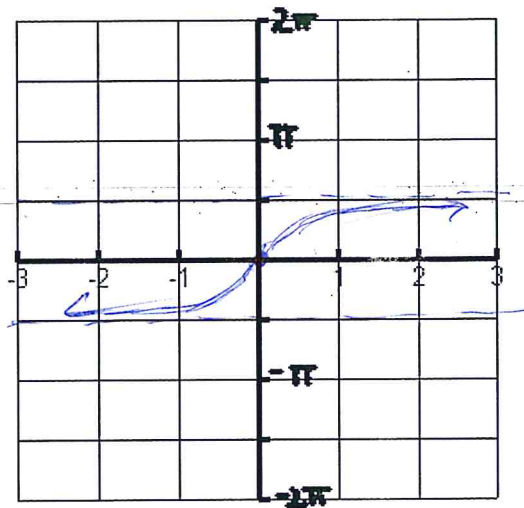
domain  $[-1, 1]$   
 range  $[0, \pi]$

3.  $y = \tan x$



domain  $-\frac{\pi}{2} < x < \frac{\pi}{2}$   
range  $(-\infty, \infty)$

$y = \tan^{-1} x$



domain  $(-\infty, \infty)$   
range  $(-\frac{\pi}{2}, \frac{\pi}{2})$